

### Corporate Headquarters

28181 River Drive  
 Circleville, Ohio 43113  
 Phone: 740.477.5000  
 Sales: 800.654.5696  
 Fax: 740.477.5001

<http://www.telesis.com>  
<http://www.pinstamp.com>

### Michigan Office

740 Welch Road  
 Commerce Twp., MI 48390  
 Phone: 248.624.4249  
 Fax: 248.624.4431



**PINSTAMP®**, **VisionTrack®**,  
**IdentiPlate®**, **ProScript®**, **Bench-**  
**Mark®**, **TeleScribe®**,  
**Merlin®**, and **PS-OCR® II**  
 are registered trademarks of Tele-  
 sis Technologies, Inc.

©Copyright 2006  
 Telesis Technologies, Inc.  
 All rights reserved.  
 Specifications subject to change with-  
 out notice.

### Worldwide Locations

#### TELESIS FRANCE

Parc Internationnal  
 d'Entreprises Arlington  
 4 Boulevard Michael Faraday  
 77 716 MARNE LA VALLEE  
 Cedex 4  
 Tel: +33 (0) 1 60.42.88.19  
 Fax: +33 (0) 1 60.42.87.80

#### TELESIS EAGLE

Dolphin Street  
 Colyton, Devon UK  
 EX 24 6LU  
 Tel: +44 (0) 1297 551313  
 Fax: +44 (0) 1297 551319

#### TELESIS EUROPE B.V.

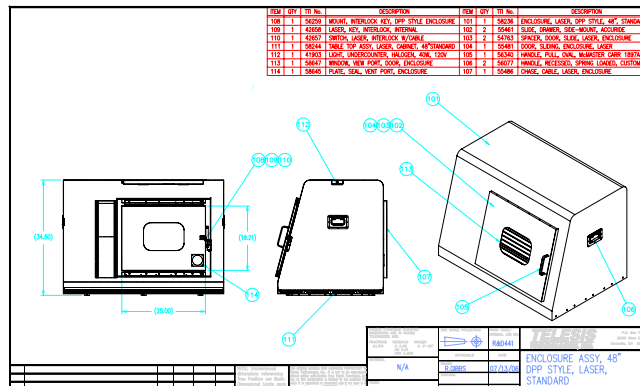
Innsbruckweg 104  
 3047 AH Rotterdam  
 THE NETHERLANDS  
 Tel: +31 (0) 1046 22136  
 Fax: +31 (0) 1046 23863

#### TELESIS MarkierSysteme GmbH

Wülfingstrasse 6  
 D-42477 Radevormwald  
 GERMANY  
 Tel: +49 (0) 2191 609080  
 Fax: +49 (0) 2191 609088

## Laser Enclosure Cabinets and Stands

Choose from a variety of laser cabinet sizes and styles — from 24" to 48". Optional stand on casters supports the cabinet and houses all peripheral equipment — making it easy to move from place to place. Also available is an extended countertop with monitor arm attachment.



### Model Numbers:

- 58658** - 24" W x 32" H
- 58643** - 36" W x 32" H
- 58650** - 48" W x 32" H

**58237** - BASE with Key-board/Monitor Mounting Bracket & Two Shelves

**Note:** the SABRE 10CO will NOT fit inside the 24" x 32" (#58658) Enclosure

