

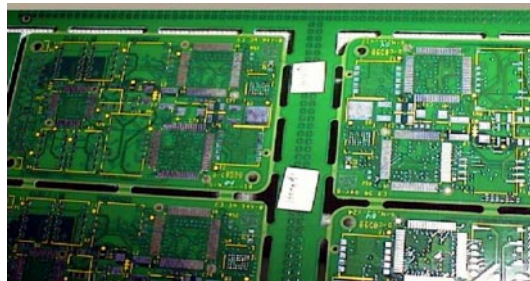
## LASER APPLICATION NOTE 2100

TELESIS

ProScript®

**Application:**

Customization of Printed Circuit Boards



**Mark depth:**

Surface to 0.001 inch (0 to 0.254 millimeters)

**Material:**

Printed Circuit Boards (Bare or inked)

**Mark Type:**

Alphanumeric, Barcode, 2d code, Logo, serialization

**Cycle Time:**

Varies for mark type. Typically less than 25 second

**Laser Advantage:**

Ability to precision mark boards in several areas without moving the boards. Ease of integration of logos and serialization into process, makes laser perfect for short run applications.

**Recommended Laser:** ProScript CO<sub>2</sub> 25 Watt and higher

**Process Notes:**

*ProScript CO<sub>2</sub> can be used to mark directly onto the PCB and/or connecting frame or the edge of the PCB. The ProScript CO<sub>2</sub> can be used to mark on directly onto the bare PCB, the solder mask or onto a Hysol® brand white colored ink. Test should be done if machine-readable codes are to be used.*