

# CO30AP Laser Marker for Packaging Applications



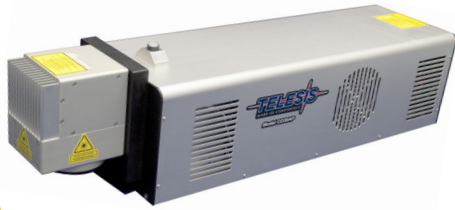
## FEATURES:

- Marking On The Fly capability for high volume applications
- Text, barcode, 2-D matrix, graphics, serial numbers, date and time code capabilities.
- Marking fields from 50mm x 50mm (2"x2") to 250mm x 250mm (10"x10")
- Unique 4 Position Rotating Scan Head for flexible integration
- 10" Handheld touch screen and system controller with Ethernet, USB and user I/O connectivity without the need of a separate PC
- Intuitive graphical Merlin® II LS Scan software available in various international languages
- Small footprint, single phase power operation allows ease of integration in a variety of applications and markets
- Quiet, efficient air cooled operation
- Sealed laser tube design with low maintenance and operating costs
- Designed to be compatible with international packaging and safety standards with optional accessories
- CDRH CLASS 4, CFR 21 Part II Compliant
- Operating life ~30,000 hours typically
- No Consumables
- Single Phase Power Requirements



**The GREEN solution**  
Air cooled CO<sub>2</sub> lasers for mark on the fly and static applications in the food, beverage, candy, fiberboard and carton industries. Capable of marking on plastics, glass, paper, leather, coated metals, and other goods

**Packaging - Laser Marking/Coding Solutions**



**CONFIDENCE** – (noun) full trust, belief in the powers, trustworthiness, reliability.

**SPECIFICATIONS:**

CW Power, CO30AP.....30W  
 Marker Dimensions.....74.1(L) x 21.2 (W) x 22.3cm (H)  
 (29.2" x 8.3" x 8.8")  
 Controller Dimensions.....42.5(W) x 14.0 (H) x 50.4cm (D)  
 (16.7" x 5.5" x 19.9")  
 Marking Head Weight..... 26.3 kg (58 lbs.) kg (42.0 lbs.)  
 Controller Weight.....8.0 kg (18.0 lbs.)  
 Power Requirement.....100 – 240 VAC, 50 – 60Hz  
 Operating Temperature Range.....16 – 35°C  
 (61-95°F)  
 Laser Enclosure Rating..... IP50/NEMA12  
 Communications Interface.....RS232, Ethernet  
 NPN, PNP 5-24VDC Product Detector  
 Customer I/O for E-Stop, Safety Interlock, Remote Start  
 Merlin® II LS software with Optional AMI Operator Interface

**OPTIONS:**

- Lens option.....75mm/100mm/150mm/200mm  
250mm/300mm/360mm
- Stainless steel enclosure/IP65
- CDRH CLASS 1 enclosures
- MOTF (Marking On The Fly) encoders and part presence sensor kit
- Fume/Dust Extractor
- Design, build and integration of custom engineered solutions available

**TELESIS Technologies, Inc.**



28181 River Drive  
Circleville, OH 43113  
800-654-5696 ph  
740-477-5001 fax  
<http://www.telesis.com>



Classification of CFR Subch. J, Pt 1040  
 INVISIBLE LASER RADIATION  
 AVOID EYE OR SKIN EXPOSURE TO DIRECT OR  
 SCATTERED RADIATION  
 CLASS 4 LASER PRODUCT  
 CO2 LASER, 10200 - 10800nm WAVELENGTH  
 30 WATTS MAX OUTPUT  
 VISIBLE LASER RADIATION  
 DO NOT STARE INTO BEAM  
 CLASS 1 LASER PRODUCT  
 DIODE LASER, 635-680nm WAVELENGTH  
 Class I AIL CW OUTPUT  
 IEC60825-1:2007