

System Overview

The Telesis® TMP3200/090 PINSTAMP® marking system permanently prints messages into a variety of materials such as steel, aluminum, and plastic. A hardened pin is pneumatically accelerated to indent dot matrix characters into the item being marked. The shape, size, density, and location of characters are determined by the user through the system software. The marking head moves the pin cartridge through X- and Y-axis motions to reach the correct position for each dot of the characters to be marked. The system software automatically controls pin extension and retraction to mark the message.

TMP3200 Marking Head includes the mechanical motion components to position the marking pin at precise X/Y positions and the pneumatic components to drive the marking pin out from, and return the pin into, the pin cartridge.

The TMP3200 marking head is an X/Y-traversing mechanism. Using two stepper motor drives, it accurately and rapidly positions the pin at coordinate-defined locations in marking window within .03175 mm (.00125"). The marker accommodates the rigorous dynamics of impacting, rebounding, and rapid positioning of the marking pin through a system of rigid rails and ball bearing saddles, timing belts, and direct-drive, toothed pulleys.

The floating pin design permits high quality, consistent marks on irregular, slightly curved surfaces. It also accommodates applications where marking surfaces cannot be positioned at a consistent distance from the marker.

The internal mechanism is protected from debris by an integral shield. Stainless steel panels slide against one another, constrained by the cartridge and the high-impact ABS cover, to prevent debris from entering the marking head.

Marker Cable, pre-wired to the marking head, connects the marker to the controller. The highly flexible cable is 4m (13 ft.) long. Optional extension cables are available for greater distances.

Marking Pins for the TMP3200 include the 25S-, 25L-, 25XL- and the 150SA-series. Refer to the marking head installation drawing for pin stroke (pin extension) dimensions. Refer to the marking depth tables for pin cone angles and depths.

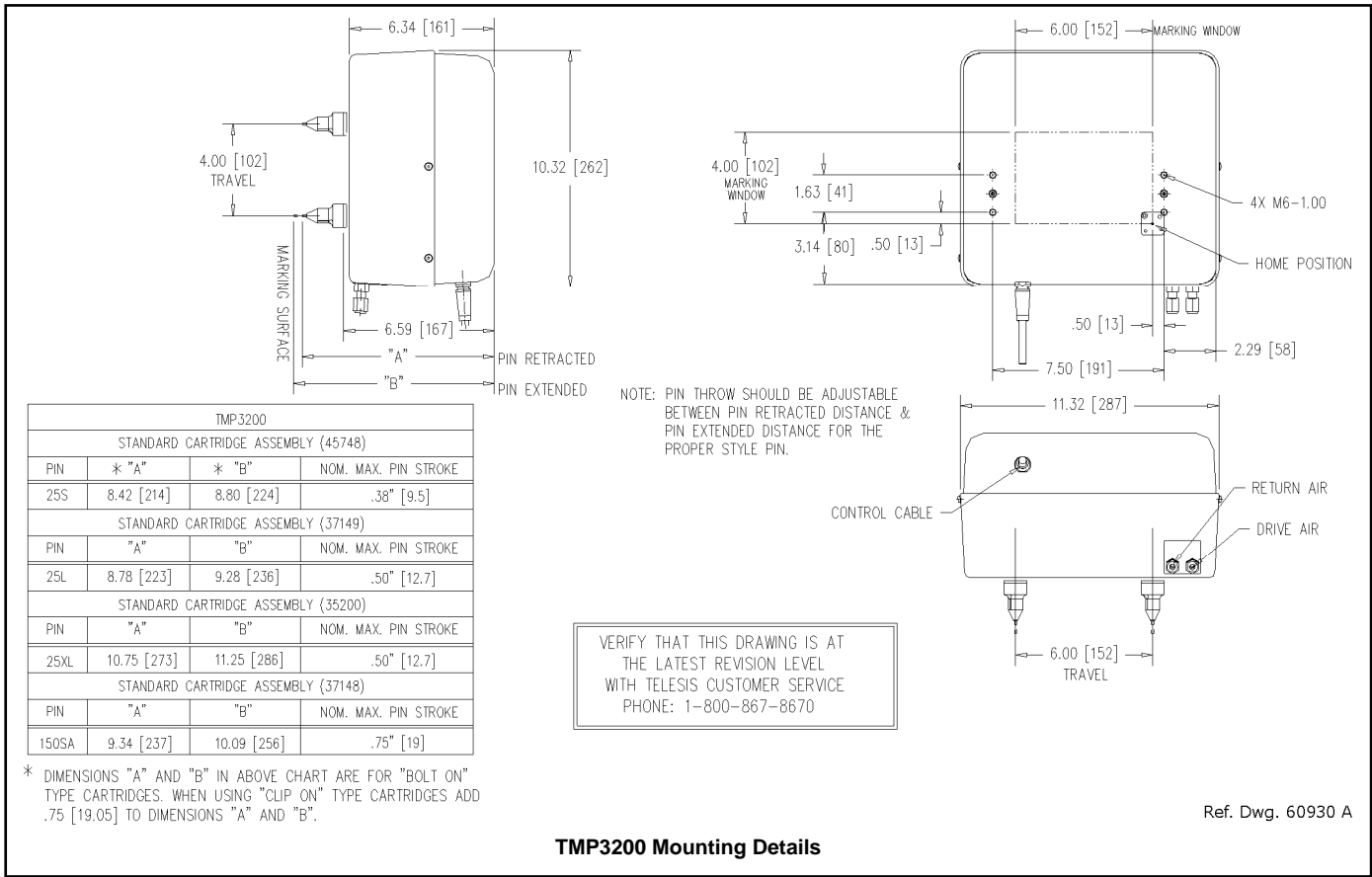
Filter/Regulator Unit includes two regulators with pressure gauges to control the drive air and return air. The first regulator contains a filter to help remove contaminants from the supply air. Two air lines connect the regulated air to the marking head. Drive air fires the impact pin; return air pushes it back into the cartridge. The standard air lines are 4m (13 ft.) long made of 6 mm tubing.

System Computer runs the Merlin®II marking system software and generates commands to control the marker. The system computer must be equipped with an add-on USB v2.0 board and must satisfy one of the following configurations:

- Windows® 2000 or Windows® XP or Windows® Vista™ operating system with Belkin® model F5U219 PCI USB 2.0 board (full-size PCs);
- Windows® 2000 or Windows® XP or Windows® Vista™ operating system with Belkin® model F5U219LP PCI USB 2.0 board (low-profile PCs);
- Windows® 2000 or Windows® XP or Windows® Vista™ operating system with Belkin® model F5U222 or IOGEAR® model GPU202 PCMCIA USB 2.0 board (laptop or notebook PCs).

To take full advantage of the Merlin II RS232 or TCP/IP capabilities, the system computer must have an available RS232 or TCP/IP port for the host interface.

TMC090 Controller connects to the system computer through a USB interface. Commands are passed from the PC to the controller, then on to the marker and its optional equipment. The TMC090 interface panel provides ports for connecting additional I/O devices for remote operation.



TMP3200 Mounting Details

System Setup

When designing a fixture, allow for 3-axis adjustment to aid in horizontal, vertical, and lateral alignment of the marking head.

1. Mount marking head using four M6-1.00 x 20 mm bolts.
2. Mount filter/regulator assembly within 4 m (13 ft.) of marker.
3. Connect drive air and return air lines to the marking head.
4. Connect supply air to input port on filter/regulator assembly.

Note: The controller is not a sealed unit. Protect it from potentially damaging conditions and contaminants. Do not block case vents. Ensure the marking system is electrically isolated from any devices that may generate extreme electromagnetic interference (EMI).

5. Locate controller as close as practical to marking head. Standard marker cable length is 4m (13 ft.).
6. Ensure controller and PC power switches are OFF.
7. Connect USB cable to controller and to PC.
8. Connect marker cable from marking head to controller.

9. Connect power cables to controller and to PC.
10. Position PC power switch to ON.
11. For customer-supplied PC, install marking system software.
12. Position controller power switch to ON.
13. Start marking system software.
14. Adjust pin stroke, drive air, and return air for impact depth.

System Options

- Tool Post Assembly
- Marking Head Extension Cables
- Clip-on Cartridge Adapter Kit
- Theta (Rotational) Axis and/or Z (Vertical) Axis
- Bar Code Scanner or Bar Code Wand with Cable
- Foot Switch (Start Print) or Pushbutton Station (Start/Abort)
- Logo/Font Generator Software

TMP3200 Marking Head

Specifications. The TMP3200 marking head specifications are subject to change without prior notice.

DIMENSIONS	<i>see TMP3200 Mounting Drawing</i>
WEIGHT	6.8 kg (15 lb.), marking head and cable
OPERATING TEMP.	0° to 50°C (32° to 122°F), non-condensing
AIR SUPPLY	Clean and dry, 4.0 to 6.9 bars (60 to 100 psi)
AIR CONSUMPTION	0.04 SCFM (idle) 0.8 SCFM (marking)
MARKING AREA	150 x 100 mm (6.0 x 4.0")
PIN TYPES	25S-, 25L, 25XL, or 150SA-series
PIN MATERIAL	Powdered metal or stainless steel with diamond tip or carbide (25S, 25L, 25XL series) Powdered metal or tool steel with carbide tip (150SA-series)

Marking Characteristics. The TMP3200 can produce characters as small as .76 mm (.030"), printed at any angle within the marking window. Printing resolutions range from 4 to 79 dots per cm (10 to 200 dots per inch) for an engraved look. The depth of mark can be adjusted over a significant range by adjusting the pin stroke and, to a lesser extent, by adjusting the drive air pressure.

Pin Life. Pin life depends largely on the type of material being marked, how hard or abrasive it is, and the required marking depth. On typical metals with a hardness of Rockwell Rb47, marking at a depth of .005" (.127 mm), powdered steel pins average about 3 million impressions before needing sharpened; carbide pins average approximately 9 million impressions. If carbide pins are used, marking times will increase by approximately 25% due to the increased weight of the pins.

Marking Speeds. The system will mark up to four characters per second when marking 3 mm (.118 in.) high, 5 x 7 dot matrix characters using a 25S powdered steel marking pin with the standard 25S cartridge, with a pin stroke of 3 mm (.118 in.) and the drive air pressure set to 5.5 bars (80 psig). The marking speed can be adjusted to allow more precisely formed characters. Doing so, under these same conditions, will result in reduced marking speeds. Note that marking speeds vary widely depending on character size, drive air pressure, dot density, pin stroke, pin type and pin cartridge. Increased character size, increased dot density, increased pin stroke, and/or decrease drive air pressure all result in decreased marking speeds. The use of a heavier marking pin, such as the 25S carbide pin or the 150SA carbide-tipped pin, or the use on non-standard marking pin cartridges will also result in decreased marking speeds. Specific times and speeds can be verified by a Telesis representative.

Marking Noise. Although every attempt is made to reduce noise, the material being marked significantly influences the noise level. For example, marking a solid lead block produces less noise than marking a thin-walled steel pipe.

Marking Depth. The following tables provide sample marking depths. Drive air was set at 5.5 bars (80 psi); return air was set at 1.5 bars (20 psi); pin stroke was set to the maximum allowable distance for each pin type to achieve the maximum depth of mark.

Max. Marking Depths – Type 25S Powdered-Metal Pin

MATERIAL (HARDNESS)	30° CONE	45° CONE	60° CONE
Aluminum (Rb2)	.178 mm .007 in.	.229 mm .009 in.	.279 mm .011 in.
Brass (Rb22)	.152 mm .006 in.	.178 mm .007 in.	.203 mm .008 in.
Cast Iron (Rb47)	.127 mm .005 in.	.152 mm .006 in.	.178 mm .007 in.
Cold Rolled Steel (Rb53)	.102 mm .004 in.	.127 mm .005 in.	.152 mm .006 in.

Max. Marking Depths – Type 25S Carbide Pin

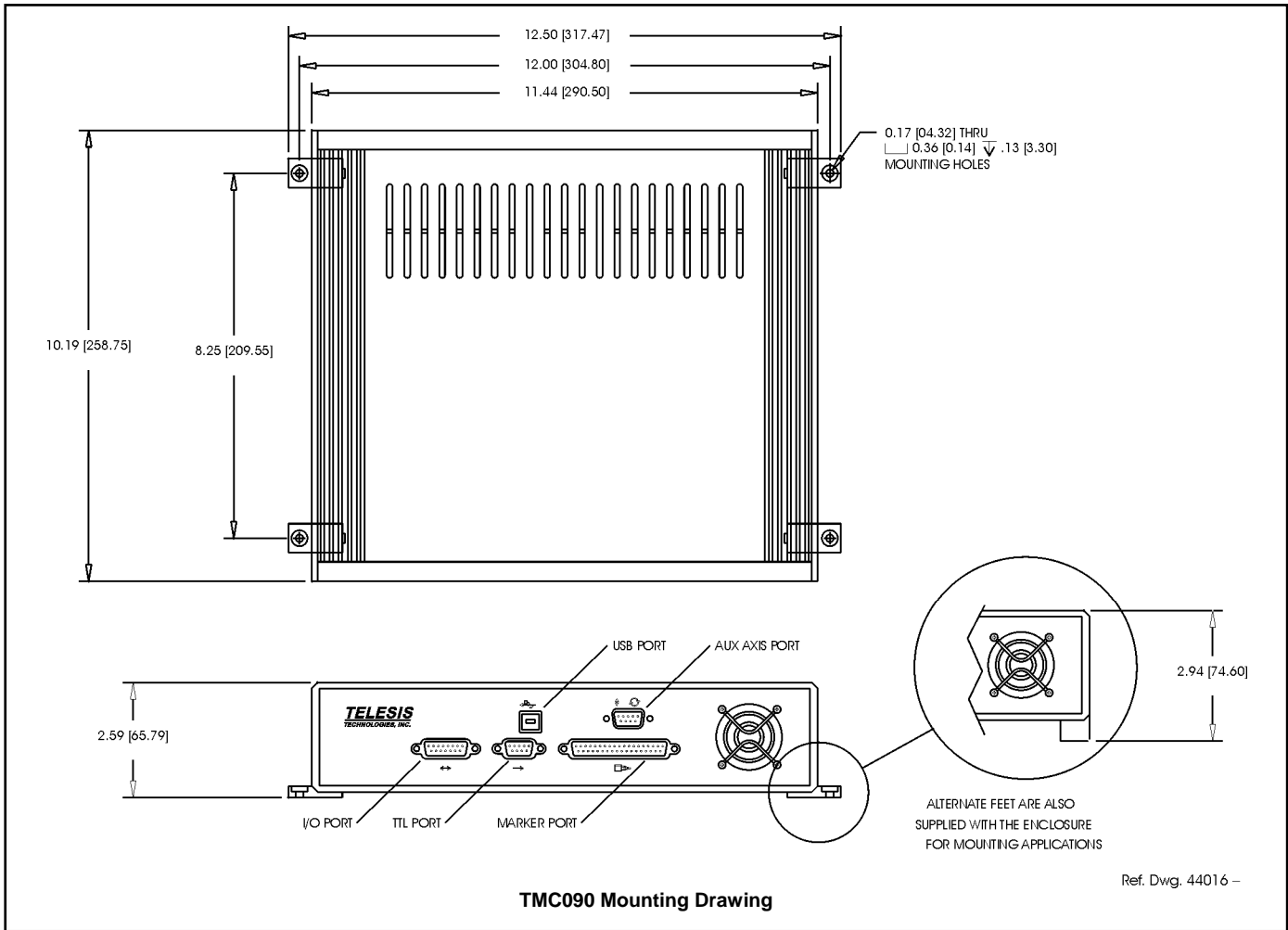
MATERIAL (HARDNESS)	30° CONE	45° CONE	60° CONE
Aluminum (Rb2)	.178 mm .007 in.	.229 mm .009 in.	.305 mm .012 in.
Brass (Rb22)	.152 mm .006 in.	.203 mm .008 in.	.254 mm .010 in.
Cast Iron (Rb47)	.127 mm .005 in.	.178 mm .007 in.	.203 mm .008 in.
Cold Rolled Steel (Rb53)	.102 mm .004 in.	.152 mm .006 in.	.178 mm .007 in.

Max. Marking Depths – Type 150SA Carbide-Tipped Pin

MATERIAL (HARDNESS)	30° CONE	45° CONE
Aluminum (Rb2)	.356 mm .014 in.	.457 mm .018 in.
Brass (Rb22)	.229 mm .009 in.	.330 mm .013 in.
Cast Iron (Rb47)	.203 mm .008 in.	.279 mm .011 in.
Cold Rolled Steel (Rb53)	.203 mm .008 in.	.254 mm .010 in.

Merlin II Visual Design Software

The marking system software runs on the system PC and connects to the controller via the USB port. It provides a 32-bit user interface to design pattern files and to operate the marker. The software is an easy-to-use, graphical-design application that provides tools for creating, saving, loading, and editing user-defined patterns. Each pattern contains one or more fields; each field defines a single object. Printable objects may be created to define text strings, arc-text strings, geometric shapes, graphics, and machine-readable data matrix symbols. Non-printable objects may be defined to specific commands to the marker (e.g., Pause, Go to, Input, or Output). Printable text fields may include alphanumeric characters, symbols, and special message flags. Message flags automatically insert data into the text string, such as serial numbers, times, dates and user-defined codes.



TMC090 Controller

Specifications. The TMC090 controller specifications are subject to change without prior notice.

DIMENSIONS	<i>refer to TMC090 Mounting Drawing</i>
RATING	NEMA 1 (I.P. 30)
WEIGHT	2.15 kg (4.75 lb.)
OPERATING TEMP.	0° to 50°C (32° to 122° F), non-condensing
REQUIRED POWER	95-130 VAC, 2 amps, 50-60 Hz single phase 200-250 VAC, 1 amp, 50-60 Hz single phase
I/O VOLTAGE	12 to 24 VDC (customer-supplied)

Environmental Considerations. The following environmental considerations must be taken into account when installing the TMC090 controller.

Contaminants. The vented and fan-cooled TMC090 is rated NEMA 1 (IP30). Accordingly, in environments where solid and/or liquid contaminants are present, the possibility exists that these contaminants can be drawn into the TMC090 controller and possibly result in failure of a number of electronic components. For that reason, in these types of environments, the controller must be located in a sealed industrial enclosure.

EMI Susceptibility. Although the system has been found to be in compliance with pertinent susceptibility standards, care should be taken when installing near welders and other extreme generators of electromagnetic interference (EMI). Particular care should be taken to ensure welder currents are not injected through the marking head chassis. The marking head chassis is connected to the electrical service earth ground through the marking head cable. The marking head should be electrically isolated from all surfaces which could become part of a welder current path.

Interface Panel. The interface panel provides various ports for connecting the controller to the marking system equipment. The Marker port, USB port, and Aux Axis port are used to connect the marking head, system PC, and optional auxiliary axes, respectively.

I/O control signals may be connected to the I/O port and the TTL Input port. (See *I/O Control Signals*.) RS-232 and TCP/IP communications may be connected to the PC and routed to the marker through the USB port. (See *Host Communications*.)

TCP/IP Interface. The Ethernet (TCP/IP) interface is most often used with host computers communicating over a local area network (LAN). With this type of interface, you may use either Extended Protocol or Programmable Protocol.

The Port parameter identifies the host computer socket that is assigned to the marking system. If more than one marking system is installed in a network configuration, each system must use a separate and unique port number. The Address parameter identifies the IP (Internet Protocol) address of the host computer. The marking system software supports both fixed addressing and dynamic addressing.

RS-232 Interface. The serial (RS-232) communications interface is most often used with remote devices such as host computers, terminals, or bar code scanners. The RS-232 interface supports both Extended Protocol and Programmable Protocol.

The following describes the serial data character format on all transmissions to and from the system PC.

- Asynchronous
- 300, 600, 1200, 2400, 4800, 9600, 19200, 38400, 57600, or 115200 Baud
- 1, 1.5, or 2 Stop Bits
- 5, 6, 7, or 8 Data Bits
- None, Even or Odd Parity

I/O Control Signals. The TMC090 is configured for DC I/O only.

The TTL Input port may be used to connect a remote push button control for sending Start Print and Abort commands to the marker.

The I/O port may be used to connect a PLC or other DC I/O source. The I/O port allows remote control of printing, aborting, and monitoring of the Ready and Done output signals. Additionally, the I/O port allows for remote pattern selection. The marking system can monitor four separate input signals and, based on the on/off state of those signals, will select and open a specific pattern stored on the PC.

Cable connectors and connector pins are supplied with the controller for constructing appropriate interface cables.

START PRINT	Input signal: begin print cycle
SEL_0, 1, 2, 3	Input signals: pattern selection
ABORT	Input signal: abort print cycle
INPUT COMM	For all inputs (+ or – supply)
READY	Output signal: ready for message or start print
DONE	Output signal: print cycle complete
OUTPUT COMM	For all outputs (+ or – supply)

Host Communications. The marking system software allows you to configure communication parameters to transmit and receive data to and from a host computer or a remote I/O device. The host communicates with the marking system software via the host interface on the system PC. The software passes information to and from the marking equipment via the controller USB interface. To provide maximum integration flexibility, the system software supports Ethernet (TCP/IP) interfaces and serial (RS-232) interfaces. It also provides two protocol choices: Programmable Protocol and Extended Protocol.

Programmable Protocol. Use this protocol where very simple one-way communications are required (such as with bar code scanners). Programmable Protocol provides no error checking or acknowledgment of the transmitted data. Note that XON/XOFF Protocol applies even when Programmable Protocol is selected.

Starting Character specifies where the software begins to count character positions. This number must be entered in ASCII decimal format such as 2 for STX.

Terminating Character identifies the end of transmitted string (usually ASCII carriage return character, decimal 13).

Character Position counted from the starting character ignoring all characters preceding it.

Character Length accepts variable length messages (if set to 0) or messages of a pre-specified, fixed number of characters.

Ignore Character identifies the character to ignore when sent from the host (usually ASCII line feed character, decimal 10).

Message Type allows message-type recognition which defines how the marking system will use data it receives from the host.

- 49** (Type 1) overwrites first text field with data extracted from the host
- 80** (Type P) loads a specific pattern identified by data extracted from host
- 81** (Type Q) updates text in first query buffer with data extracted from host
- 86** (Type V) updates first variable text field with data extracted from host
- 0** (Type Zero) indicates that host will provide message type, field number (if applicable), and data; delegates message type selection to the host on message-by-message basis. The host message must use the format **Tnn<string>** where:
 - T** = 1, P, Q, or V to indicate the message type.
 - nn** = two-digit number to indicate field number or query text buffer where data will be placed. Note that a number is not used with Message Type P.
 - <string>** = field data (Message Types 1, Q, or V) or pattern name (Message Type P), as applicable.

Extended Protocol. This protocol selection includes error checking and transmission acknowledgment. It should be used in applications where serial communication is a vital part of the marking operation. All communications are carried out in a parent/child relationship with the host being the parent. Only the host has the ability to initiate communications. If the host does not receive a response within three seconds, it should re-transmit its original message. If no response is received after three tries, it should declare the link to be down.

The following describes the Extended Protocol message format as sent from the host to the system PC.

SOH TYPE [##] STX [DATA TEXT] ETX BCC CR

SOH ASCII Start of Header character (001H). The controller ignores all characters received prior to the SOH.

TYPE A single, printable ASCII character that defines the meaning (type) and content of the message downloaded from the host, where:

- 1** overwrites specified field of currently loaded pattern, using the data format **nn<string>** where nn is the field number.
- P** specifies pattern name to be loaded for printing
- Q** updates specified query buffer with data received from host, using the data format **nn<string>** where nn is the buffer number.
- V** updates specified variable text field of currently loaded pattern, using the data format **nn<string>** where nn is the field number.
- O** resets marker and places it online
- G** initiates a print cycle to mark the currently loaded pattern
- I** requests the marker return the status of standard output and input signals in the hexadecimal format: **O₂ O₁ ; I₂ I₁**
 The first digit of the hexadecimal code reports the signal states of output signals Spare-3 and Spare-2. The second digit reports the states of output signals Spare-1, Spare-0, Pause, Ready, and Done.
 The third digit reports the signals states of input signals Select-4 and Select-3. The fourth digit reports the state of input signals Select-2, Select-1, Abort, and Go.

[##] Two optional ASCII decimal digits that specify the Station ID number for use in multi-drop network applications. The ID may range from 00-31. Note that “00” is reserved for applications where only one controller is used. In such applications, this field may be eliminated and “00” will be assumed.

STX ASCII Start of Text Character (002H).

[DATA TEXT] Optional character string that may be required for certain message types (e.g., Type 1, P, Q, and V).

ETX ASCII end of text character (003H).

BCC Optional Block Check Code that is generated and sent to improve link reliability by providing fault detection. The BCC is calculated by taking an eight bit addition of the TYPE and DATA TEXT characters and transmitting them as a three digit ASCII decimal number in the range from 000 to 255. If the sum is greater than 255, the most significant bit overflows and is discarded.

CR ASCII Carriage Return Character (00DH).

TRADEMARKS

Telesis, **PINSTAMP**, and **Merlin** are registered trademarks of Telesis Technologies, Inc. in the United States and/or other countries.

Belkin is a registered trademark of Belkin International, Inc.

IOGEAR is a registered trademark of IOGEAR, Inc.

Vista is a trademark of Microsoft Corporation in the United States and other countries.

Windows is a registered trademark of Microsoft Corporation in the United States and other countries.