



TELESIS PROVIDES THE PART  
MARKING PRECISION, FLEXIBILITY,  
AND RELIABILITY THAT MEDICAL  
DEVICE MANUFACTURERS DEMAND.

# BEST-IN-CLASS PERMANENT PART MARKING SOLUTIONS FOR THE MEDICAL MARKET.

At Telesis, we have more than 30 years experience in marking parts for the world's largest and most respected manufacturing companies. We have proven our commitment to serving the special needs of medical device manufacturers by meeting their needs for traceability, functionality, and identification. Through our investments in laser technology, and innovative software packages, along with our process expertise and material handling know-how, we have developed a portfolio of capabilities we believe is second to none. Our large installed base of laser marking systems demonstrates the Telesis focus on the medical device marketplace.

## Exceptional laser marking solutions, standardized to simplify the medical device manufacturing process.

Telesis has developed a broad line of laser sources that is designed specifically for medical device marking. This versatility allows us to mark virtually any material with no degradation via annealing, carbonization, or foaming techniques. These proven laser technologies include:

- F-series fiber-to-fiber lasers
- E-series diode-pumped solid state lasers in IR and green wavelengths
- CO-series CO2 lasers
- S- and L-series high power YAG lasers

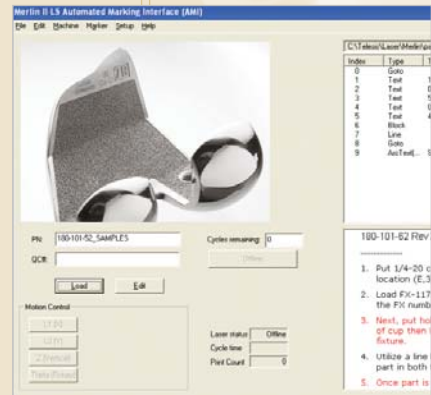
We then “build up” from these laser sources, using a range of established enclosure designs matched to your needs.



## Our Medical Instrument Clients

Telesis works with many of the leading manufacturers of medical instruments and devices, including:

- Smith & Nephew
- Medtronic
- Johnson & Johnson
- Invotec
- Beckman Coulter
- Boston Scientific
- Arthrex
- Wright Medical
- MicroAire
- Straits Orthopaedics
- Exactech
- Stryker



## Advanced material handling systems

Our material handling experts have years of experience, so they can work with you to develop the most effective solutions to your challenges. We can provide material handling systems for standard component, high-volume manufacturing lines as well as for batch marking, lower-volume parts lines. Our material handling capabilities include:

- Programmable slides, posts, and tables for large batch or component marking
- Rotary drives for precision circumferential marking
- Rotary index or conveyor-based systems for easy part loading
- Full robotics packages to eliminate multiple fixtures and reduce operator involvement

## Targeted database management

In addition to the highly-regarded Merlin® LS software for pattern design and management, Telesis can provide you the database management tools you require. Our proprietary Automated Marking Interface (AMI) software, developed in conjunction with a major medical device manufacturer, allows for automatic pattern selection that minimizes operator error. The software is designed to help you meet FDA regulations for database management, is easy to use, and is compatible with all HIBCC (Health Industry Business Communications Counsel) applications.

## Comprehensive turnkey solutions

At Telesis, we specialize in turnkey solutions where we integrate all the elements needed, whether standard or custom, to deliver the optimum level of performance. Every project has a dedicated Telesis project manager who is committed to delivering a successful solution on time and on budget.

## Support when you need it, 24/7

No other parts marking system supplier is as committed to comprehensive customer service and support as Telesis. We provide local support wherever you are, and our 24-hour customer support hotline will respond immediately to your concerns.

## Looking for consultation?

Our marking specialists will be happy to meet with you and discuss your particular operational needs, then propose a solution that will meet your application specifics and exceed your expectations.

Additionally, if you need pin-marking solutions, the Telesis PinStamp® line of marking systems is renowned the world over for top quality, durability and reliability.

Telesis. The mark of confidence.



### A Telesis Solution, from a Customer's Perspective

"The laser workstation that Telesis built for us is performing superbly. It has increased the accuracy of our marks by an order of magnitude. Our validation study gave an average CPK value of more than 6, and we have some very complicated and precise marking requirements. We are seeing at least a 50% decrease in set-ups, and a 30% increase in productivity. Telesis did an excellent job of integrating the workstation. Before the first month of operation was over, there was serious discussion about when we will purchase our NEXT workstation."

Scott Sherman, Engineer, Smith & Nephew



## CORPORATE HEADQUARTERS

### Telesis Technologies, Inc.

28181 River Drive, Circleville, Ohio 43113  
Tel 800-654-5696  
Fax +1-740-477-5001  
Sales 800-654-5696  
Customer Service 800-867-8670  
[www.telesis.com](http://www.telesis.com)

## WORLDWIDE LOCATIONS

### Telesis Systèmes de Marquage

Parc International d'Entreprises Arlington,  
4 Bd Michael Faraday,  
F-77716 Marne La Vallée Cedex 4 – SERRIS  
Tél +33 (0)1 60.42.88.19  
Fax +33 (0)1 60.42.87.80

### TelesisEagle Ltd.

Dolphin Street, Colyton,  
Devon, UK, EX24 6LU  
Tel +44 (0) 1297 551313  
Fax +44 (0) 1297 551319  
[uksales@telesistech.com](mailto:uksales@telesistech.com)

### Telesis Europe B.V.

Innsbruckweg 104,  
3047 AH Rotterdam, The Netherlands  
Tel +31 (0)10 462 2136  
Fax +31 (0)10 462 3863

### Telesis MarkierSysteme GmbH

Wülfingstrasse 6,  
D-42477 Radevormwald, Germany  
Tel +49 (0) 2191 60908-0  
Fax +49 (0) 2191 60908-88

### Telesis Taiwan

1F, No. 175, Dexiang Rd., Nanzi District  
Kaohsiung City 811, Taiwan  
Tel +886-7-3686678  
Fax +886-7-3680289

### Telesis China

Building #1, 1st Floor, 180 Zhangheng Road  
Zhangjiang Hi-Tech Park, Pudong New District  
Shanghai 201204, China  
Tel +86-021-33933851  
Fax +86-021-33933852

For more information on the entire line of  
flexible and programmable permanent marking systems,  
please call 800-867-8670 or visit [www.telesis.com](http://www.telesis.com)

