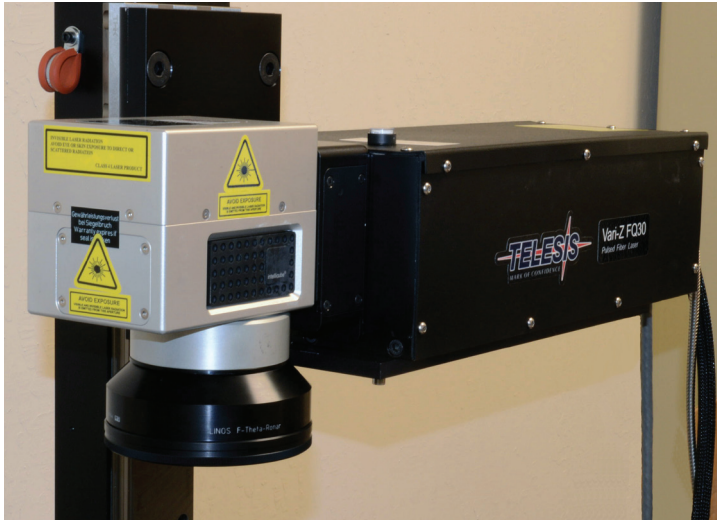


## Vari-Z Series - EV and FQ 3-Axis Laser Marking Systems



The innovative, compact and flexible VARI-Z Series of solid state laser marking systems are perfectly suited for advanced applications that require the processing of non-flat parts, multiple or uneven surfaces. The 3-Axis beam deflection systems enable processing in three dimensions. The focusing optic is galvo motor-driven, enabling it to quickly generate continuously variable stepwise image field sizes and the longest standard working distance available in the industry up to a total focused depth of 78mm. This allows the user to

change the working distance, field and spot size with the same galvo head, all under software control. With 3-Axis Marking, you can maintain a consistent system focus and fluence throughout the working volume to achieve deeper engraving as well as faster material removal. This functionality can be added to both the EV series and FQ series of laser markers.

### LASER MARKER SPECIFICATIONS

Compliance.....	CDRH, CE, CSA, UL
Wavelength.....	1,060nm
Laser Type.....	Q-switched Nd:YVO <sub>4</sub> laser Q-Switched Ytterbium Fiber Laser
Average Power (Model Dependent).....	8-50W
Available Laser Systems.....	EV40/EV25DS/EV15DS/EVCD5 FQ50/30/20/10
Positioning.....	Visible Red Diode Light
Mounting Weight (Model Dependent).....	Approx. 10 - 25kg (32 - 55lbs.)
Input Power (Selectable).....	95-250VAC, 50/60Hz
Max. Power Consumption (Model Dependent).....	300-1000W
Cooling.....	Air Cooled (no water cooling required)
Operating Temperature Range.....	18° to 35°C (65°F to 95°F) Non Condensing

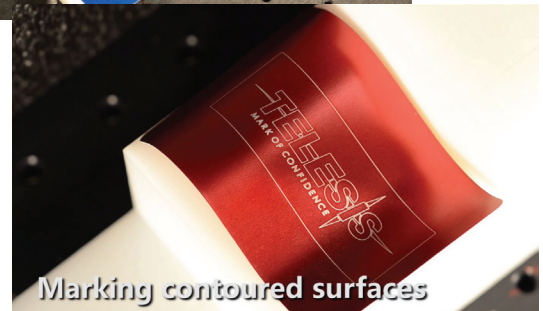
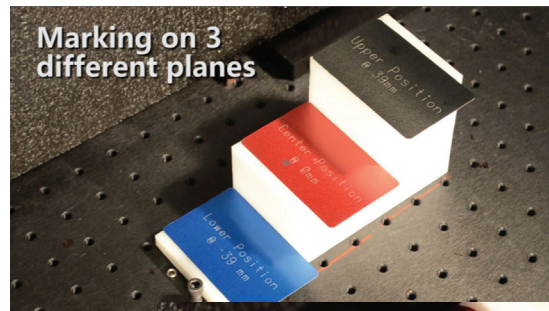
### SOFTWARE

Software.....	MERLIN® II LS
Operating System.....	Windows® 2000, Windows XP, Windows Vista™, Windows® 7, or Windows® 8 with Optional Embedded, Desktop or Rackmount PC
Communication Interface.....	Serial, TCP/IP, I/O



QR Code Web Page Product Link

DATA MATRIX™ 2-D Code Marking Capability  
Meets all Department of Defense UID Requirements



### OPTIONS

- Lens options of 160mm (+/- 15mm focus) and 254mm (+/- 39mm focus)
- 3 position galvo head can be configured at 0°, 90° or 180°
- Visible Red Aiming Diode
- Integrated PC system controller
- CDRH Class 1 enclosures
- MOTF (Marking On The Fly) encoders and part presence sensor kit
- Additional Axis Automation for X, Y, Z and rotation
- Fume/Dust Extractor
- Design, build and integration of custom engineered solutions available