

ProScript® ECLIPSE™ Nd:YAG LASERS by TELESIS

For the Ultimate in High Speed, High Quality Product Identification
ECLIPSE is designed for hard surface treatments. It's the choice for marking titanium and other high strength alloys, medical implants and hard plastics.

FEATURES:

- Unique, Straight INVAR Rail Design for Easy Alignment, Increased Power and Thermal Stability
- Lightweight, Dust Sealed Rail Cover features "HideAway" Handles for portability
- Fixed Beam Expander
- Safety Shutter, Co-Axial Red Diode Pointer and Emission Light for Simple Operation
- 90, 180 and 270 degree Galvo Rotation allows Vertical and Horizontal Firing
- All Marking Head Components and Assembly Warranted for One Year



LASER CONTROLLER/DI WATER CABINET FEATURES:

- Compact, "All in One Design" Mounted on Casters
- Slide-out DI Water System | DI and Particle Filters
- Flow, Temperature and DI Sensors
- Keyswitch and E-Stop with Manual Shutter Control
- 1st Pulse Suppression Circuitry

SPECIFICATIONS:

Type Nd: Lamp-pumped YAG
 Wavelength 1,064 Nm
 Average Power 100 Watts
 Mode Q-Switched or CW (Continuous Wave)
 Q-Switch Frequency 0 to 100 KHz
 Marking Speed02 to 197 in/sec (.5 to 5000 mm/sec.)
 Marking Fields Several Available
 Electrical 3 phase/3 wire, 230V. 50-60Hz nominal
 Total System Power Consumption 7.5 KVA
 Classification CDRH Class 4 (can be supplied in a TELESIS CDRH Class 1 Workstation)
 Internal DI Water Requires (5) gallons, steam distilled
 External Cooling Water 5 gallons/min. (19 liters/min.) 50° F - 65° F, (10° - 18° C)

LENS CONFIGURATIONS AVAILABLE:

Focal Length	Marking Field	Work Clearance
100mm	45mm x 45mm (1.7" x 1.7")	97mm (3.81")
160mm	90mm x 90mm (3.5" x 3.5")	176mm (6.92")
163mm	110mm x 110mm (4.3" x 4.3")	185mm (7.28")
254mm	155mm x 155mm (6.0" x 6.0")	296mm (11.65")
* 330mm	215mm x 215mm (8.4" x 8.4")	387mm (15.23")
* 420mm	275mm x 275mm (10.8" x 10.8")	493mm (19.4")

* Application dependent



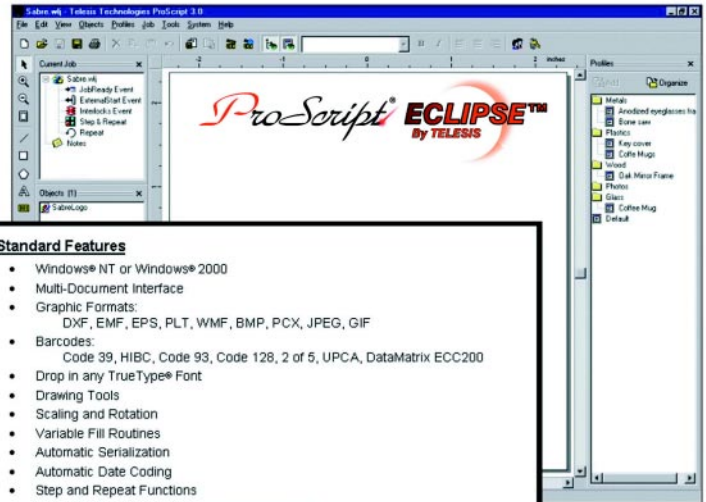
ECLIPSE™ Nd:YAG LASERS by TELESIS

PROSCRIPT® LASER SOFTWARE FEATURES:

- Specially Designed by TELESIS – based on WINDOWS® NT and 2000 Platforms
- Import a wide range of Graphic Formats including DXF from AutoCAD™, WINDOWS® Bitmaps, True Type Fonts as Vector or Raster Files
- Highlight, click and mark !

COMPUTER REQUIREMENTS:

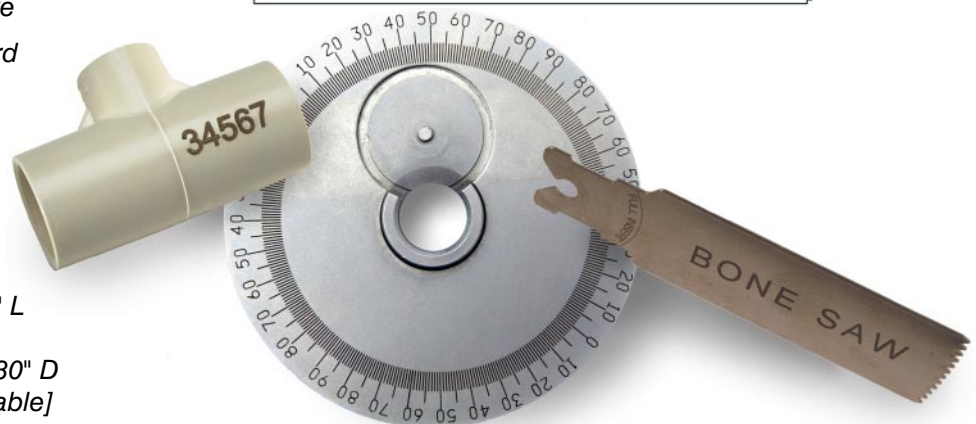
- Pentium® III 128 Mb RAM (minimum)
- Multi-gigabyte HDD
- Video, Sound Card
- CD-ROM and 3.5" Floppy Disk Drive
- SVGA Monitor, Mouse and Keyboard



- Standard Features**
- Windows® NT or Windows® 2000
 - Multi-Document Interface
 - Graphic Formats: DXF, EMF, EPS, PLT, WMF, BMP, PCX, JPEG, GIF
 - Barcodes: Code 39, HIBC, Code 93, Code 128, 2 of 5, UPCA, DataMatrix ECC200
 - Drop in any TrueType® Font
 - Drawing Tools
 - Scaling and Rotation
 - Variable Fill Routines
 - Automatic Serialization
 - Automatic Date Coding
 - Step and Repeat Functions
 - Four Axis Stepper Motor Control (XYZ & Rotary)
 - I/O Monitoring and Control
 - TCP/IP Interface
- and many more...

DIMENSIONS:

Laser 8" W x 9" H x 56" L
 Laser Power/DI Water
 Supply Cabinet 24" W x 27" H x 30" D
 Umbilical Length 10 Feet [detachable]



Telesis is the leader in product identification technology. Our factory integrated systems are found in a wide range of manufacturing settings around the world. All Telesis products - Standard or Custom - are backed by a global network of experienced Distributors, Representatives, highly skilled Field Service and Customer Support Professionals.

TELESIS/EAGLE

Dolphin Street
 Colyton/Devon
 UK EX24 6LU

Tel: +44 [0 1297 551313]
 Fax: +44 [0 1297 551319]

TELESIS EUROPE B.V.

Innsbruckweg 104
 3047 AH Rotterdam
 THE NETHERLANDS
 Tel: 31.10.462.2136
 Fax: 31.10.462.3863

TELESIS

Industrial Identification/Traceability Equipment

P.O. Box 1000, Circleville, Ohio 43113
 Tel: 800-654-5696 Fax: 740-477-5001
<http://www.telesis.com>

MEMBER

- OSA Optical Society of America
- LIA Laser Institute of America
- SPIE International Society for Optical Engineering

CERTIFICATION

- OSHA
- UL
- CSA



TELESIS MarkierSysteme GmbH

An der Hasenjagd 8
 42897 Remscheid,
 GERMANY

Tel: 49.21.91.60.90.80
 Fax: 49.21.91.60.908.88

TELESIS FRANCE

BP438 Rue du Compas
 Zi des Bethunes
 95005 Cergy Pontoise cedex
 France
 Tel: .33.13.909.1212
 Fax: .33.13.909.1142